

多种叉车属具能够满足您各种纸卷搬运的需求
Lift truck attachments for all your paper handling needs.

叉车属具在石材行业的应用

HUAMAI
Make Handling Easier!

Forklift Attachments Used In Marble Industry



机械吊臂
Mechanical Jib Attachment

起初为将货物吊高而设计，该属具常用于石材玻璃行业。
Jib Attachment was designed for lifting goods originally. This forklift attachment commonly used in the stone /glass industry.



大吨位调距叉
Heavy-Duty Fork Positioner

用于处理不同托盘尺寸的搬运，石板过于长，需要更宽的调距叉来搬运。
Heavy-Duty Fork Positioner was commonly used for handling pallets of different sizes. It needs a wider fork to carry if slate is overlong.

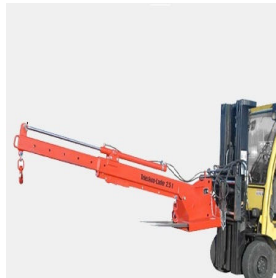


石材搬运器
Marble Handler

一款可以安全又高效地搬运大理石、花岗岩和其他石材的搬运，可以支持从封闭集装箱去除石材。
Marble handler is kind of carrier for handling marble granite and other kinds of stone materials safely and efficiently, as well as removing stones from enclosed containers.



华迈，让搬运变得简单。
HuaMai. Make Handling Easier.



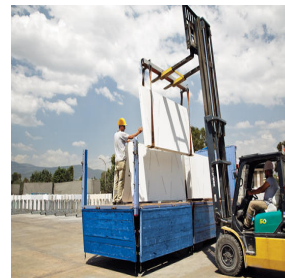
液压吊臂
Hydraulic Jib Attachment

可让司机用同一台叉车同时搬运近或远的货物，非常适合长形状的石材装卸。
Hydraulic Jib Attachment makes driver can use the same forklift truck to carry the goods near or far simultaneously, which is suitable for loading and unloading long shaped stone.



石材吊具
Marble Lifter

可人工调节两吊臂的间距，灵活适应不同包装的石材，防止大板掉落。
Marble Lifter can be used for adjusting the distance between two lifting arms, which can also be flexibly adapted to stones with different packaging to prevent the falling of large slates.



横杆
Coil Boom/Roll Prong

通过牢固的绳子外力对大板吊高、搬运作业，将货物转移至客户现场，通过减少或取消人工搬运能够大大降低搬运成本。
Slates were lifted and carried by the external force of the tight rope. Moving the goods to the customer's site, while reducing or eliminating manual handling operations, which can greatly reduce the cost of handling.



厦门华迈科技有限公司

Huamai Technology Co.,Ltd

地址：厦门市湖里区岭下西路273号

Add: No.273,Lingxia West Road, Huli District, Xiamen,

Tel: 0592-5194699

Web: www.huamaattachments.com

Email: attachments@huamaiglobal.com

China,361000